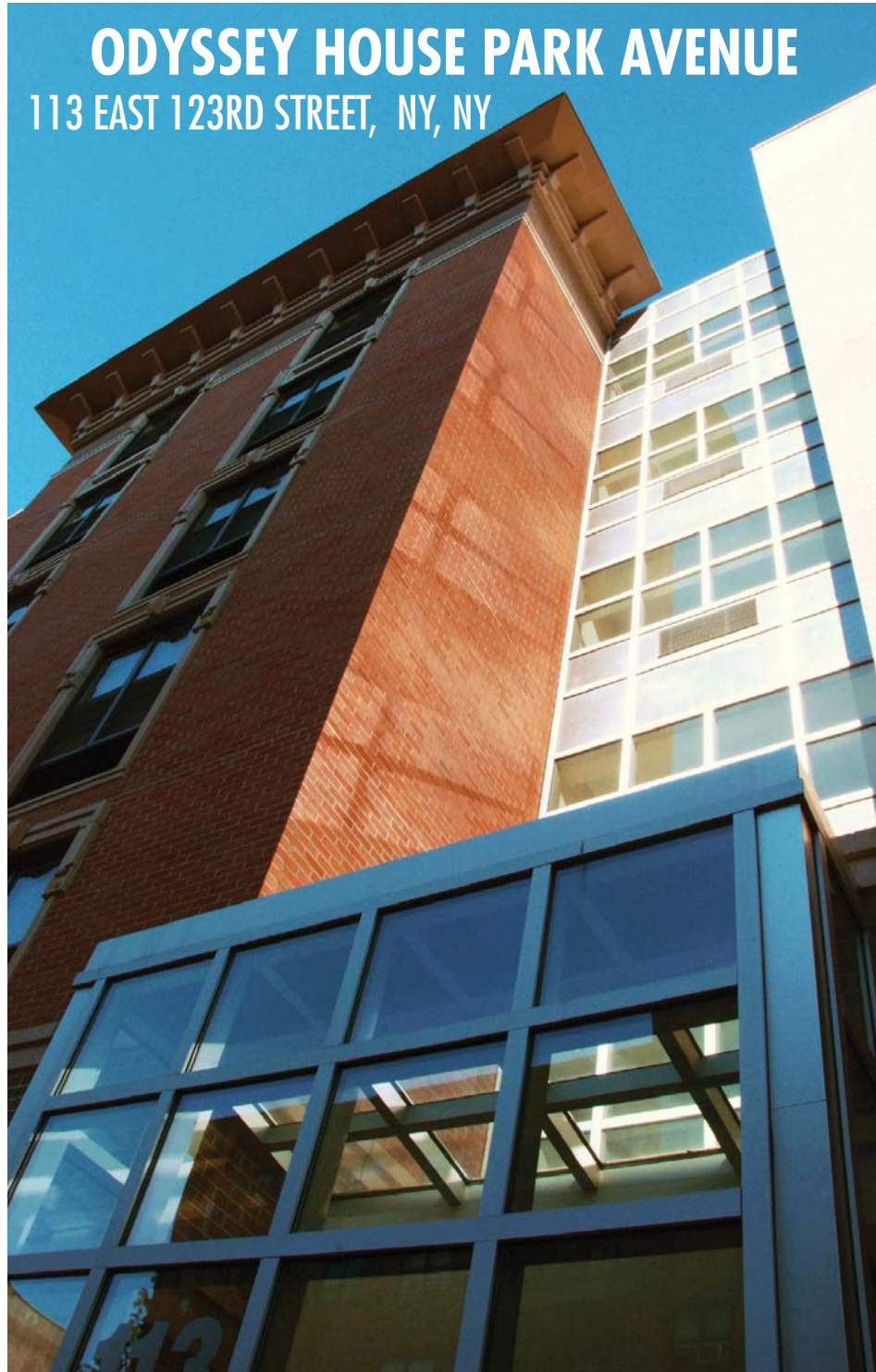


ODYSSEY HOUSE PARK AVENUE

113 EAST 123RD STREET, NY, NY



Client | Odyssey House
Sponsor | Office of Mental Health
Cost | \$9.2 million



FRONT FACADE



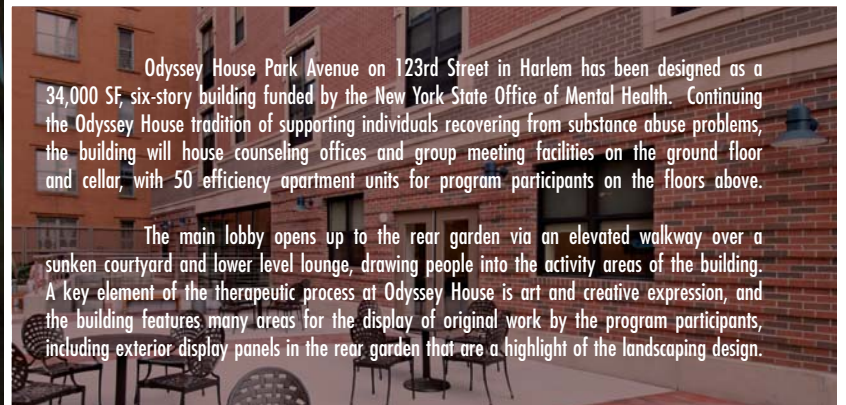
CONFERENCE ROOM



REAR YARD



ACCESS STAIR



Odyssey House Park Avenue on 123rd Street in Harlem has been designed as a 34,000 SF, six-story building funded by the New York State Office of Mental Health. Continuing the Odyssey House tradition of supporting individuals recovering from substance abuse problems, the building will house counseling offices and group meeting facilities on the ground floor and cellar, with 50 efficiency apartment units for program participants on the floors above.

The main lobby opens up to the rear garden via an elevated walkway over a sunken courtyard and lower level lounge, drawing people into the activity areas of the building. A key element of the therapeutic process at Odyssey House is art and creative expression, and the building features many areas for the display of original work by the program participants, including exterior display panels in the rear garden that are a highlight of the landscaping design.